

XEROX®

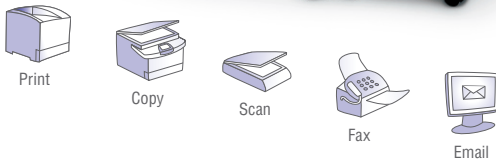
Technology | Document Management | Consulting Services

print | copy | scan | fax | email

The power of office productivity



WorkCentre[®] 5665/5675/5687



**High-speed performance.
Outstanding productivity.
Advanced multifunction capabilities.**

These are the cornerstones of the all-in-one office powerhouse that easily handles the high-volume print demands of large, busy workgroups. And with robust copying, scanning, faxing and a host of innovative Xerox technologies, you get a total workflow solution that excels at streamlining your unique job processes.

Ultimate performance

Engineered to exceed your highest expectations, Xerox WorkCentre devices maximize office productivity, delivering the power and advanced functionality needed to help your workgroup achieve exceptional results — smarter, faster and easier.

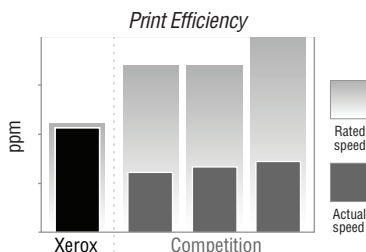
One robust platform

Choose the speed that suits your workgroup — up to 65, 75, or 87 ppm — and get the same functions and usability features.

Truly faster printing

The Smart Controller's advanced design delivers the fastest effective network print speed in the industry. When printing the documents business professionals work on every day, Xerox WorkCentre devices print

faster than the competitors' higher-speed-rated devices.



Experience true multitasking

These MFPs have the power to perform five tasks at once: RIP, receive, program ahead, process the queue, and transmit. This advanced capability lets you copy, print, scan or fax even while other jobs are running.

No printing bottlenecks

The Xerox-exclusive Print Around feature holds a job needing resources (such as a different paper size) and prints the next job in the queue. Plus, users can manage the job queue at the device by promoting or deleting jobs accordingly.

Select a job to get details or to perform operation		
All incomplete jobs		
#	Job Name	Status
1	Bob's Slides	HELD : RESOURCES
2	Ann's Report	PRINTING

Print Around feature keeps jobs moving

Smaller network-friendly files

JBIG 2 and MRC scan compression technologies optimize scan and fax performance, providing significantly faster transmission speeds and reducing network load and storage space on network and mail servers.

From paper to digital to anywhere

WorkCentre devices turn your paper documents into intelligent digital files and open the door to more possibilities — more ways to organize, store and share your information than ever before.



Scan to Email



Scan to Mailbox



Scan to Home



Scan to PC



Scan to Network

Cutting-edge scanning functionality

Increase efficiency with Scan to Email for quick document distribution to multiple email addresses, plus Scan to Mailbox to store on the device and Scan to Home to store on a personal directory.

Scan format flexibility

Scan directly to PDF, PDF/A or XPS electronic document formats. You can also scan to searchable PDF or XPS formats for universal compatibility and easy archiving, organizing, searching and sharing.



Scan to Searchable
PDF and XPS

Automatic file distribution

The exclusive **Xerox SMARTsend™** option lets you route documents to multiple destinations — email, folders, document management systems or remote devices — from a single scan, using a pre-set workflow. LDAP capability can even integrate your network address book.

Convert documents into text files

Scan to PC Desktop® software offers editing and document conversion tools, including batch creation of secure PDFs from all PC applications.

Color scanning

With optional color scanning, users can take advantage of all the benefits of scanning while maintaining the original look and feel of full-color documents.

Store frequently printed documents

The Capture/Print, Save & Reprint feature lets you store scanned documents directly on the device for exact reprint later, while also retaining the flexibility to change document parameters before reprinting.

Extensive fax capabilities

Network Server Fax, Internet Fax enablement (to avoid long distance charges) and Walkup Fax with LAN Fax eliminate the need for a dedicated fax machine.



Stay up and running

Innovative reliability features predict when components need replacing. Then, with SMart Kit™ customer-replaceable components, you can change them yourself. No service call needed. And no costly downtime.



The SMart eSolutions system simplifies ownership, with hands-free, hassle-free, secure administration of Xerox devices for automatic meter reads and supply replenishment (U.S. only).

Advanced copy and print features

Plenty of support for specialized print applications, such as annotation, Bates Stamping, ID card copy, tab print capability and page-level programming right from the print driver.



Better for the environment

Get a powerful multifunction device that's truly environmentally friendly, featuring power save with quick start-up, as well as compliance with RoHS (Restriction of Hazardous Substances) and ENERGY STAR® 2007 standards.



Robust finishing capabilities let you assemble professional-looking documents.



Collate



Hole punch



Staple



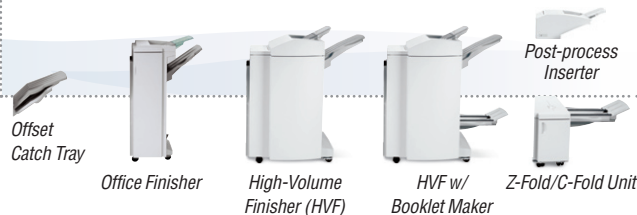
V-fold

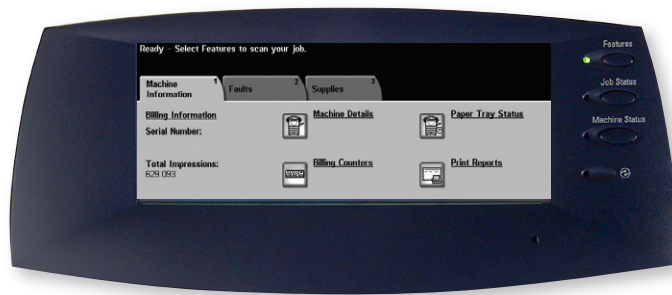


Saddle-stitch booklet



- 1 Duplex Automatic Document Handler (DADH) automatically scans documents as fast as 85 spm.
- 2 Convenience Stapler provides off-line 50-sheet stapling.
- 3 100-sheet Bypass Tray handles heavy paper up to 80 lb. cover.
- 4 Two 500-sheet Universal-Size Trays hold paper sizes up to 11 x 17 in.
- 5 Optional Envelope Kit provides trouble-free feeding of 50 envelopes.
- 6 High-Capacity Tandem Tray holds a total of 3,600 sheets of letter-size paper.
- 7 For high-volume workgroups, you can add the 4,000-sheet Letter-Size High-Capacity Feeder, or the 2,000-sheet Short-Edge Kit in either letter/legal size or oversize for 11 x 17 in. media.
- 8 Three optional Finishers. Choose basic features like staple and hole punch, or advanced capabilities to produce paginated, saddle-stitched and folded booklets and Z- and C-folded brochures. An optional Post-process Inserter lets you add preprinted color covers, tabs and other inserts to your print and copy jobs.





Easy, optimized management and accounting

With fast deployment and easy support, your WorkCentre device is ready to deliver the performance you need, when you need it.

Flexible, familiar operation

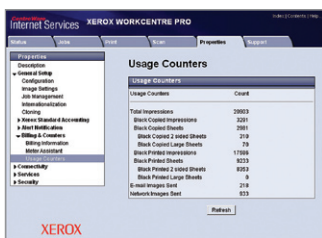
A choice of speed capabilities allows you to “right-size” based on the workload demands of each office work group. And because they all share the WorkCentre platform, users will recognize the look and feel, including the user interface, print drivers and web interface.

Streamlined device and fleet management

Server-based CentreWare® Web makes it easy to deploy, configure, troubleshoot and generate usage reports for all network devices, regardless of manufacturer.

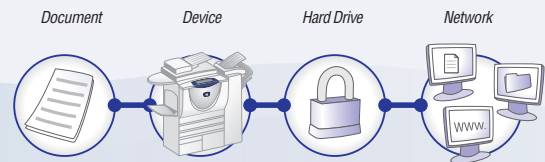
Easy set-up, seamless administration

Xerox CentreWare Internet Services simplifies installation, cloning and network administration, and provides quick access to device and job status, accounting information and other operational metrics. Plus, automatic email alerts notify network administrators of events that require attention, such as low toner levels.



Maintain tight control over costs

Use Xerox Standard Accounting software to set user access and usage limits, and to generate usage reports for greater cost control of printing, copying, scanning and faxing.



Integral Security

Robust security features run the full gamut of entry and exit points to ensure the safety of critical information.

- **Network Authentication** restricts access to scan, email and network fax features by validating user names and passwords prior to use. With Audit Log capabilities you'll know who sent what and when.
- **Secure Print** prevents unauthorized viewing by holding jobs in the print queue until a PIN is entered, releasing documents to print. Secure Print job submission utilizes IPsec.
- **Image Overwrite** eradicates data by overwriting the disk surface with patterns of data.
- **Embedded Fax** prevents unauthorized device access via the fax subsystem. There is complete separation of the fax telephone line and the network connection.
- **Device Access Password Protection** ensures administrative set-up screen and remote network settings cannot be viewed or altered without authentication.
- **IPv6 Network Routing and 802.1x Security Protocols** provide peace of mind that your WorkCentre device is compliant with existing and emerging connectivity policies.
- **IP Address Restriction (IP Filtering)** controls communications with specific network clients.
- **Secure Scan** transmits files using HTTPS (SSL).
- **Secure Device Administration** with HTTPS is enabled through CentreWare.
- **Secure Access Unified ID System** allows you to use access cards to log in to the device. **Follow You Print** lets you submit print jobs to a secure print queue and print them at the device of your choice after ID authentication.

Imagine the possibilities... if you could make your multifunction device work the way you work

The world is changing. There's constant pressure to do more with fewer resources. You know your business better than anyone. Now your WorkCentre device can adapt to fit the way you work, not the other way around.

Your Xerox WorkCentre device is now more productive, and your work just got easier. Menus and languages specific to your business or workgroup, such as "fax to accounts payable" or "submit to claims department," can appear on the touch screen. Xerox Extensible Interface Platform, or EIP, is at the heart of this. It enables a variety of applications that extend the power of your WorkCentre by allowing you to securely find, save, print and share critical information with just a few easy steps right on its touch screen.

The possibilities are endless.



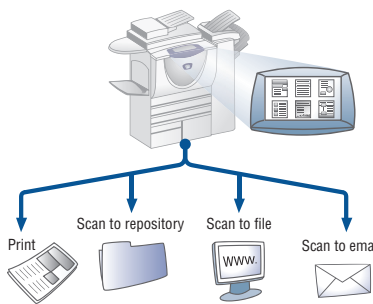
Connect with applications that make your work easier **With EIP**

Access and print information without the use of a computer.

Need your company's latest price list or a brochure on this week's hottest-selling product? Simply use the touch screen on your WorkCentre to browse an online repository such as Xerox DocuShare®, Microsoft SharePoint® or Windows folders, select the document, and print it. No need to use a computer, and no need to keep filing cabinets filled with material that quickly becomes outdated.

Simply scan information and store it exactly where you want it.

Transform hard copy forms into archived digital information with just a few simple steps. A new patient fills out a medical history form, the receptionist securely scans the form, previews a thumbnail image on the touch screen, and then sends the form to a folder named Patient Records. EIP-enabled applications make it possible.



Control costs with user-friendly accounting.

With Xerox accounting solutions you can set usage limits by individual and by function. Track device usage through a printed report, file download or integration with a partner accounting solution.

Conveniently and securely access your WorkCentre with a simple swipe of your ID card.

Xerox makes it easy for you to ensure that only authorized users access your WorkCentre devices by requiring passwords or access cards. Once authenticated, you can access EIP-enabled applications that are personalized to meet your needs.



Simplify the process for complex fax distributions.

Send and receive faxes even when a fax board has not been installed in the device. Faxes can be scanned in at the device or submitted from a user's desktop using a fax print driver. Faxes can be tracked and audited to ensure regulatory compliance.

Connect with a variety of advanced partner solutions created with your business in mind.

Xerox EIP enables an array of Business Partner solutions that extend the value of your WorkCentre device with advanced accounting, faxing and scanning capabilities.



Potential EIP application.

It's that **easy.**



	Copier	Copier/Printer	Copier/Printer/Scanner
	5665 / 5675 / 5687	5665 / 5675 / 5687	5665 / 5675 / 5687
Speed	Up to 65 / 75 / 87 ppm	Up to 65 / 75 / 87 ppm	Up to 65 / 75 / 87 ppm
Device Memory	256 MB std / 768 MB max	768 MB std / 1024 MB max	768 MB std / 1024 MB max
Paper Handling	Duplex Automatic Document Feeder (DADF): 100 sheets Bypass Tray: 100 sheets; Custom sizes: 4.25 x 5.5 in. to 11 x 17 in. / A6 to A3; 16–53 lb. bond / 60–216 gsm Trays 1–2: 500 sheets each; Sizes: 5.5 x 8.5 in. to 11 x 17 in. / A5 to A3; 16–53 lb. bond / 60–200 gsm High-Capacity Tandem Tray: 3,600-sheet total (1,600 and 2,000 sheets); Size: 8.5 x 11 in. / A4		
	Optional High-Capacity Feeder (HCF): 4,000 sheets; Size: 8.5 x 11 in. / A4 long edge feed HCF Kits (HCF required): 2,000-sheet 11 x 17 Short Edge Kit or 2,000-sheet Letter/Legal Short Edge Kit; Other Kits: Envelope Kit		
Finishing options	Offset Catch Tray (available with 5665): 300 sheets Office Finisher (available with 5665 / 5675): 2,000 + 250-sheet trays, 50-sheet multiposition stapling, optional hole punch Professional Finisher (available with 5665 / 5675): 1,500 + 250-sheet trays, 50-sheet multiposition stapling, 3-hole punch (2-hole option), saddle-stitch booklet making, V-folding High-Volume Finisher (HVF) (available with 5665 / 5675 / 5687): 3,000 + 250-sheet trays, 100-sheet multi-position stapling, optional hole punch High-Volume Finisher w/Booklet Maker (available with 5665 / 5675 / 5687): adds saddle-stitch booklet making Z Fold / C Fold Unit with HVF w/Booklet Maker: adds letter-size Z- and C-folding Post Process Inserter with HVF and HVF w/Booklet Maker: adds preprinted inserts; Convenience Stapler: 50-sheet stapling		
Copy	As fast as 2.7 seconds		
First-page-out time	As fast as 2.7 seconds		
Resolution (max)	600 x 600 x 8 dpi input / 4800 x 1200 dpi interpolated output		
Copy features	Automatic 2-sided, Collation, Auto reduction / enlargement, Auto paper select, Auto tray switching, Image quality enhancement, Transparencies, Booklet creation, Multi-up, Invert image, Covers, ID Card Copy, Annotation and Bates Stamping, Build Job, Inserts and tab copying, Sample set, Job storage and reprint*		
Print			
Processor	NA	1.4 GHz AMD Athlon dedicated / 80 GB Hard Drive shared	
Connectivity	NA	Ethernet 10/100 Base T, IEEE 802.5 (Token Ring) (via adapter), Wireless Ethernet (IEEE802.11a/b/g) (via third-party adapter)	
PDL Support	NA	PCL®6, PCL 5e, PostScript® 3™ emulation, LCDS, SCS, XES and IPDS via third-party transforms, and direct print TIFF, PDF, AS/400 support via Workstation Customization Objects	
Resolution	NA	Up to 1200 x 1200 dpi	
Print features	NA	Delay, Sample, Secure, and Store Print; Simultaneous rip, receive, Program Ahead, queue-process and transmit; Bidirectional print drivers; Exception page programming; Tab printing; Embedded Web Server for remote control/monitor/setup; Job monitoring at device and at desktop	
Fax	Optional: Walkup Fax (33.6 Kbps, one-line [32 MB] and two-line [256 MB] options) with JBIG compression	Optional: Walkup Fax (33.6 Kbps, one-line [32 MB] and two-line [256 MB] options) with LAN Fax	Internet Fax, Network Server Fax, Optional: Walkup Fax (33.6 Kbps, one-line [32 MB] and two-line [256 MB] options) with LAN Fax
Scan	NA	NA	Network Scanning with Email (Authentication and LDAP), Scan to Mailbox, Scan to Home, Scan to searchable PDF, PDF/A and XPS Optional: Color scanning enablement, Scan to PC Desktop, SMARTsend
Security	Fax Security	Fax Security, Secure Print, 802.1x, HTTPS (SSL), SNMP V3, IPv6, IPsec, Network Authentication, Device Access Password Protection, IP Filtering, Audit Log, Disk Encryption for Store Print and Scan to Mailbox features, Disk Image Overwrite	
Accounting	Internal Auditor – Copy	Internal Auditor – Copy; Xerox Standard Accounting – Copy, Print, Fax; Optional: Network Accounting enablement (Thru 3rd Party)	Internal Auditor – Copy; Xerox Standard Accounting – Copy, Print, Fax, Scan; Optional: Network Accounting enablement (Thru 3rd Party)
Other Options	Upgrade Kit to Copier/Printer, Upgrade Kit to Copier/Printer/Scanner	Upgrade Kit to Copier/Printer/Scanner	NA
	256 MB Pre collation Memory, Foreign Device Interface, Xerox Copier Assistant	Foreign Device Interface, Xerox Copier Assistant, USB 2.0 / (IEEE 1284) Parallel Port Kit, Fax / Scan / Accounting Partner Solutions, Xerox Unicode International Printing, Xerox Secure Access Unified ID System™ with Follow You Print™	

*Not available on Copier Only model

